

**Yours
is a
wise
decision**

CUSTOMER OPERATING
INSTRUCTIONS

MODEL G-900

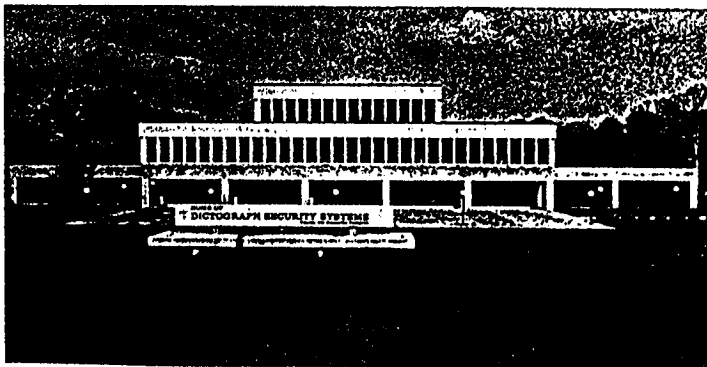
**burglar
alarm system**

**GUARDIAN
INDUSTRIES, INC.
PHOTOGRAPH
SECURITY SYSTEMS**

© 1979, GUARDIAN INDUSTRIES, INC.

Table of Contents

	Page
A Message From Dictograph Security Systems	3
About Your System	4
Operating Instructions	5-8
Annual Inspection and Regular Testing	9
Other Fine Products	10-11
Warranty	12



A MESSAGE FROM
DICTOGRAPH SECURITY SYSTEMS

...The people who care about you

Yours is indeed a WISE decision. Deciding on a Dictograph Burglar Alarm System amplifies the importance you've placed on your family's safety and peace of mind, particularly since you now know that the dangers from crime are an around-the-clock threat.

By recognizing the importance of protecting your loved ones, your home, and your valued possessions, you have joined the hundreds upon hundreds of thousands of others, who, like you, have learned to depend on ... and trust ... a Dictograph Automatic Burglar Alarm System for the right kind of protection.

Now that you, and your family, and your home are protected by a Dictograph Burglar Alarm System, we sincerely hope the time never comes when you need it. But with a burglary committed every 10 seconds, according to the most recent FBI crime statistics, how long could you have trusted to luck and still slept comfortably each night or gone about your daily activities confident in your safety?

You have been shown how your system operates, and instructed on how to use it. You can certainly rest more comfortably knowing that your system was installed by professional alarm technicians. In addition, you have been provided with a 24-hour telephone number so you can get quick service, if it is ever required. Remember, your local Dictograph distributor takes as much pride in maintaining the highest level of service as we take in producing what we believe to be the finest alarm systems and components in the world.

By selecting a Dictograph Burglar Alarm System you have gained much more than just a sophisticated piece of hardware. You have gained peace of mind and a full dimension of security for your entire family from this day on. Again, congratulations on a WISE decision.



about the system

Your Dictograph Burglar Alarm System is precision-engineered and quality manufactured to meet the most stringent standards of excellence. A major feature of the system is its ability to switch over to "Emergency Power", assuring continued operation during a power failure, providing, of course, the "Emergency Power" is properly maintained according to Dictograph Security Systems instructions. Once the power is restored, the system will automatically transfer back to household electric. We recommend that the "Emergency Power Supply" be replaced with a fresh Dictograph battery every 12 months; regardless of its condition, to assure proper operation.

The system is designed to operate on a closed circuit principle. Simply, when the system is "armed" or "on", an electric current flows from the control panel through the circuit wiring, through each detection device (doors and window switches, etc.), and back to the control panel. Any time the continuity of electric current flowing through the circuit is broken, such as by an intruder opening a door or window, cutting a circuit wire, or attempting to disconnect a detection device, the alarm is sounded immediately. (In "normal" or "off" position, the green "ready" lamp is extinguished.)

The alarm signal is a distinct intermittent sound (short on and off pulsations). Both the interior and exterior alarm-sounding devices will pulsate simultaneously. The exterior alarm features a large red emergency light (optional) that flashes in unison with the sounding alarm. This added feature aids passersby, neighbors, and police in locating your home quickly.

inside your home

1.

Close all doors, windows, and other protected accesses and be sure that the ready lamp on the control panel or the green light on remote stations are lighted. (NOTE: If there is still no light, then some protected access is not properly closed, or an interior protected area is not secure, or there is a break in the wiring. If, after checking the doors and windows again, there are still no lights, CALL FOR SERVICE.)

2.

With READY lamp lighted, you may turn the system on by operating the switch inside the control panel, or at any remote station by operating the red button or the key switch (depending on which type of control station is installed). The red "armed" lamp will then light, indicating that the system is on.

If a protected access is opened, or any additional detection devices are breached at such a time, the system will sound the alarm at once, with the signals continuing even if the door, window, etc. is again closed. It is important to bear in mind that your alarm system is installed with one or more of two different inside remote control circuits. The pushbutton control normally provides "limited" control, which means that the pushbutton may not be used to silence the alarm signals, only to "arm" or "disarm" the system. In such cases, the alarm signals can be silenced only at the control switch inside the control panel cabinet. On the other hand, the key-operated inside remote control normally provides "full" control. This means that these devices can be used not only to "arm" or "disarm" the system, but also to silence the alarm signals, by turning the key in the high security lock switch. As an additional feature, to prevent nuisance alarms which might be caused by an attempt to arm the system without a "ready" (green) indicator being lit, the "limited" control (or pushbutton) cannot be used to arm the system when a protected door or window is open, or when other "trouble" situations exist. It is important that you ask your distributor which procedure is incorporated in each remote station, because in some cases, it is possible for the installer to reverse, or otherwise alter these installation options.

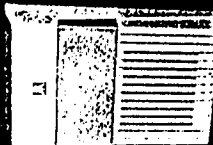
You Can depend DICTOGRAPH



MASTER
CONTROL
PANEL



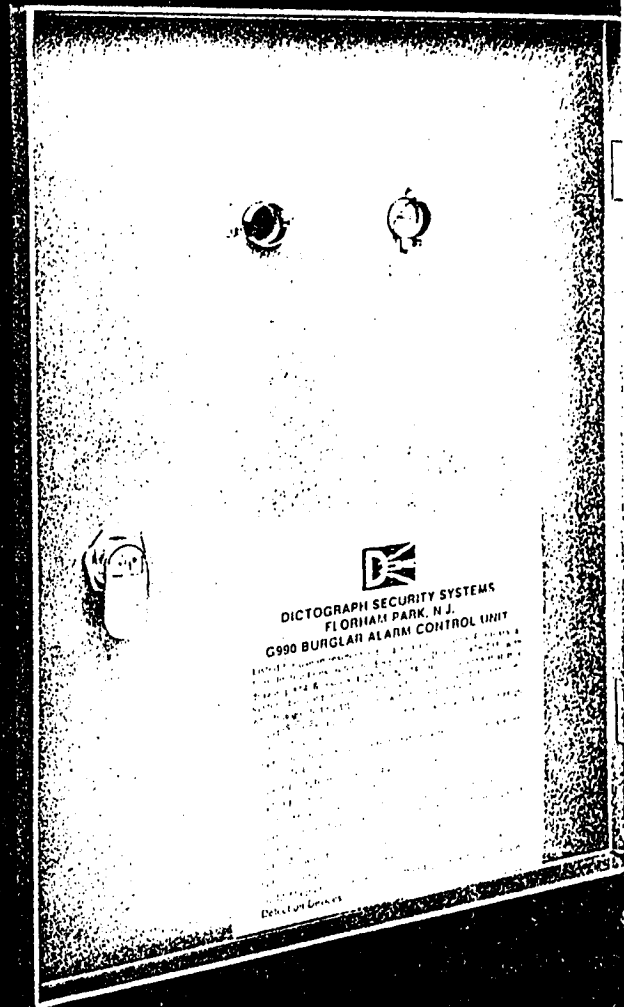
HIGH SECURITY
LOCK SWITCH

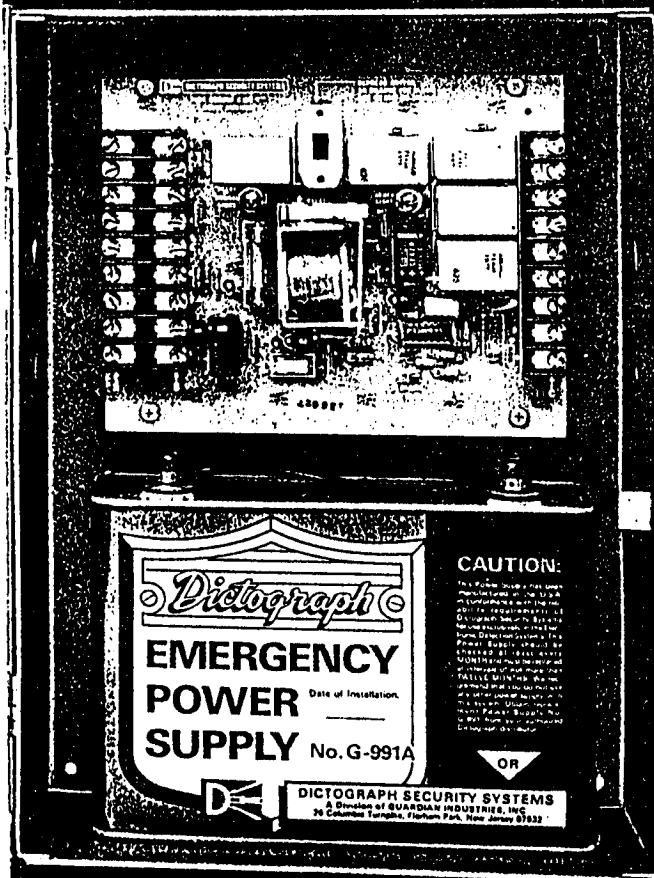


INTERIOR
ALARM



OUTSIDE
ALARM with
EMERGENCY
SIGNAL
LIGHT





REMOTE CONTROL STATION



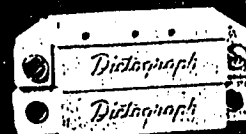
REMOTE CONTROL with HIGH SECURITY LOCK



**PROWLER /
EMERGENCY
ALARM STATION**



**MAGNETIC
CONTACT**



HOW TO OPERATE YOUR SYSTEM WHEN

leaving your home

1.

Close all doors, windows, and other protected accesses and note that the READY lamp or the green "armed" lamps are lighted. You may now leave your home and turn the system on at the outside key station.

2.

After closing and locking the door behind you, insert your key into the key-switch and turn it to the right. The outside red indicator will light, indicating your system is armed.

CAUTION: Do not attempt to turn your system on from inside the house and then try to leave, since the alarm will sound as soon as you open the door.

HOW TO ENTER YOUR HOME

when the system is on

1.

The lighted red indicator on the outside key switch tells you the system is on. Any attempt to enter your home through a protected access before turning your system off will sound the alarm.

2.

To enter, insert your key into the keyswitch and turn to the right. The red indicator will extinguish and the green indicator will light. You may now enter your home without triggering the alarm. After entering, if you wish to turn the system back on, simply operate the switch on the nearest control station. Be sure, however, that the control station green indicator is lighted, to be sure you have completely closed the door behind you.

PROWLER/ASSAULT ALARM STATION

This feature provides a means of manually sounding the alarms whether the system is on or off. A single button switch on the extension cord is furnished for remote use. Simply pressing the button activates the alarms; it is not necessary to hold the button down. The wall-station is designed with two buttons. This reduces the possibility of accidental activation since depressing just one button will not sound the alarms. By depressing both buttons on the wall-station simultaneously, or the single button on the extension cord, you will cause the alarms to sound. If the optional Wireless Prowler/Alert Alarm is provided, simply pressing the button on the portable transmitter will cause the alarms to sound. Please note that the wireless systems should be tested weekly from the most distant point that might be used. The battery in the transmitter should be replaced at least once a year.

The Prowler/Alert Alarms will activate your system regardless of whether the system is "on" or "off". Once the alarms have been activated in this manner, they can only be silenced by depressing the re-set button located inside the Master Control Panel.

RESTORING ALARM CUT-OFF TIMER

Your system is equipped with an automatic alarm cut-off timer to meet the requirements of many local ordinances which demand that the alarm be automatically silenced if you cannot be located to manually silence the system. The timer will cause the alarms to be automatically silenced after a pre-selected period of time (4, 15, or 30 minutes). The 30-minute time period is recommended, unless local ordinances dictate otherwise. After the timer has silenced the alarm, the control panel senses if the detection devices have been restored to normal. If the detectors have been restored, the entire system will be automatically reset and again sound the alarm to report any subsequent break-in. The "armed" lamp is arranged to extinguish whenever the detection devices are in the alarm condition. This means that the "armed" lamp will remain extinguished as long as a protected access remains open, even though the timer may have silenced the audible alarms. An extinguished "armed" lamp gives a positive indication that the system is out of service, whether from a subsequent alarm condition, or because the system has been turned off. Please note that if the alarm cut-off timer is not connected during the initial installation, it may be connected at a later date, by your Dictograph distributor.

annual inspection

AND REGULAR TESTING

Although your system is engineered to the strictest quality standards, and was installed by professional technicians, it should be tested and inspected on a regular basis.

We suggest that you arrange for your Dictograph distributor to inspect your system at least once a year. In addition, you should test it regularly, particularly if you have been away for some time and the system has not been turned on and off frequently, or if the alarms have not been sounded for over a month.

HOW TO COMPLETELY test your system

(NOTE: We suggest you enlist the aid of a family member, or friend, to help you with the system test. One of you will have to be at a full system control station to reset the alarm each time it is triggered. Also, we suggest that you alert your neighbors about the testing, and if your system is connected to a police headquarters, or a surveillance center, inform them also, otherwise they will respond to your alarm. After the testing is completed, call and confirm that your alarm signals were received.)

PERIMETER PROTECTION

1.

Close all doors, windows, and secure all other protected areas. Then arm the system. Note that the ARMED indicator on the control panel is lighted. Check that all red indicators at all remote stations are lighted.

2.

Have someone open a protected door about five inches. Once the alarm sounds, the door should be closed. Reset the system and continue the procedure until all accesses have been tested. (NOTE: If any green or red indicators do not light, or the alarm fails to test, CALL FOR SERVICE.)

INTERIOR/EMERGENCY PROTECTION

3.

Test all backup devices, if installed, as above. These devices must be reset at master control panel. (Floor and stair traps, panic stations, wireless prowler alerts, photo electric cells, etc.)

EMERGENCY POWER PROTECTION

4.

Test the condition of the battery by removing the control panel power cord from the wall outlet, or remove fuse from the control panel. The system will automatically switch over to battery power. Reconnect the power cord or fuse and the system will transfer back to primary power. (NOTE: If the primary house power ever fails for an extended period of time, such as an hour or more, you should replace the standby battery. Also, the battery should be replaced once a year, regardless of condition, to assure proper operation.)

CAUTION: The Dictograph Emergency Power Supply originally installed, is designed specifically for your Dictograph System. Do not use a substitute. Contact your local Dictograph distributor to order a new battery. If unable to contact a distributor, contact Dictograph Headquarters in Florham Park, New Jersey.

other fine dictograph products YOU CAN ADD TO YOUR SYSTEM ANYTIME . . .

Strategically placed at various locations around the interior of your home, these backup devices provide even greater security should an intruder breach or bypass the perimeter protection and gain entry to your home.

Under Carpet Mats and Runners are placed under carpets beneath windows, on stairs, in hallways and foyers, etc. Under normal conditions there are no unsightly bumps, yet, when an intruder walks on the protected area, the alarm sounds.

Modern Photo Electric Systems are virtually undetectable by an average intruder when properly installed. They provide excellent coverage across doorways and hallways, and for areas with numerous windows, such as sun rooms, jalousie porches, etc. When an intruder walks through the invisible infrared beam, the alarm sounds.

These, and other sophisticated devices, can be installed with separate controls, and turned on and off independently of your perimeter system, to allow free use of your home while the family is inside. When everyone has retired for the night, or the entire family is away, these additional devices provide an important dimension of "backup protection".

Another important consideration is to expand your system to include "Off-Premises" monitoring. Your system can be connected to a police or fire headquarters (local ordinance permitting), or to a 24-hour, 7-days-a-week Dictograph Surveillance Center. This type of backup protection assures rapid response to any alarm situation providing even greater protection for your entire family.

YOU CAN ALSO ADD

fire and smoke protection

Your present system can be upgraded to provide 24-hour protection against the ravages of fire. Obviously, none of us can rely upon our senses to alert us to the danger of fire or smoke in our home, especially when everyone is asleep. There is an answer, however — a Dictograph Fire and Smoke Detection System — a system that stands guard 24 hours a day, and is designed to do just one thing . . . to save your family's lives in case of fire.

The Dictograph Fire Alarm System features a Master Control Panel; the fastest, most sensitive, fixed-temperature automatic heat detector on the market; and a smoke detector that meets and exceeds every existing standard, code, and regulation set forth by such bodies as Underwriters Laboratories, Factory Mutual, American National Standards Institute, and the National Fire Protection Association.

For more information, get in touch with your local Dictograph Distributor today. He'll be glad to answer any of your questions.