

# R A D I O N I C S

---

READYKEY® K6100 Readykey for Windows

---

Software Installation Manual

---

## Notice

The material and instructions in this manual have been carefully checked for accuracy and are presumed to be reliable. However,

Radionics, Inc. assumes no responsibility for inaccuracies and reserves the right to modify and revise this manual without notice.

It is our goal at Radionics to always supply accurate and reliable documentation. If a discrepancy is found in this documentation, please mail a photocopy of the corrected material to:

Radionics, Inc.  
Technical Writing Department  
1800 Abbott Street  
Salinas, California 93901

## UL Listings

UL 294 - Access Control System Units  
UL 1076 - Proprietary Burglar Alarm Systems

## Trademarks

Windows™ and Windows NT™ are trademarks of Microsoft Corporation  
Microsoft®, Windows® 95 and MS-DOS® are registered trademarks of Microsoft Corporation

Novell™ and Netware™ are registered trademarks of Novell, Inc.

---

# Table of Contents

---

<b>About this Document.....</b>	<b>1</b>
Other Documents .....	1
Terminology .....	1
<b>System Requirements.....</b>	<b>1</b>
Description of the System.....	1
Security Block .....	1
PC Specification .....	1
MS-DOS and Windows.....	5
Windows 95 .....	9
Using Other Applications with Readykey for Windows .....	9
<b>Installation of Readykey for Windows.....</b>	<b>10</b>
Before Installation .....	10
Installing the Security Block.....	10
Installing Readykey for Windows .....	10
Windows 3.1 and Windows for Workgroups 3.11 .....	17
Windows 95 .....	18
Using Readykey for Windows .....	18

---

## About this Document

---

This document describes how to install the Readykey for Windows software onto a PC. It also includes details of the PC specification required to use Readykey for Windows.

This manual should be read by anyone installing or intending to install a Readykey for Windows system, which will be administered from a single PC. Installers planning a multiple PC Readykey for Windows installation, with administration from more than one PC across a network, should refer to *Readykey for Windows Multi-PC Installation Manual* for software installation procedures instead of using this document.

It is assumed that readers are at least familiar with PCs, MS-DOS and Windows. It is beyond the scope of this document to review all the features of these products. However it is recommended that anyone new to Windows use the Windows Tutorial which can be found in the Help menu of the Windows Program Manager.

### Other Documents

The Readykey for Windows documentation comprises a number of documents. Which of these you should read depends on the system you are installing.

However the *Readykey for Windows System Overview* should be read by all users. In addition, you should also read the *Readykey for Windows for System Programming Manual*

The *Readykey for Windows Multi-PC Installation Manual* should be read instead of this Software Installation Manual by those intending to administer a Readykey for Windows system from more than one PC via a network.

The following documents are also applicable to Readykey for Windows systems, describing the installation and configuration of the Readykey hardware:

**Central Network Controller Installation Manual**

**K2100 / K1100 Installation Manual**

### Terminology

Throughout this manual reference is made to Windows and Readykey for Windows.

**Windows™** refers to the *Operating System* produced by Microsoft Corporation which is now provided as standard with nearly all Personal Computers (PCs). **Readykey for Windows** refers to the *Access Control Administration Software* produced by Radionics designed to operate under the Microsoft Windows operating system.

# System Requirements

---

## Description of the System

Readykey for Windows is a means of administering an Access Control System consisting of Readykey Door Controllers and Readers. The software is available in several versions depending on the total number of Doors, Sites and Divisions to be administered. For a complete description of Sites and Divisions see *Readykey for Windows System Overview*.

However, the installation disks provided are the same for all types of system. The same procedure is used to copy the Readykey for Windows software from the installation disks to the hard disk of the PC which will be used to administer the Readykey for Windows system, regardless of the system being installed.

A Readykey for Windows system can be installed in such a way that they can be administered from more than one PC across a Local Area Network, using Microsoft Windows for Workgroups 3.11 or Windows 95. If you intend to install Readykey for Windows for administration in this way, then refer to *Readykey for Windows Multi-PC Installation Manual* for software installation information.

## Security Block

Readykey for Windows software is similar in its features, no matter how many doors are being controlled. A **Security Block** or 'dongle', is supplied with each copy of Readykey for Windows software. It is the Security Block that determines how many doors may be administered and the facilities available. Certain controls and settings may be limited or hidden on some systems. As well as the number of doors there are also some **Extra Cost Features** that will only be available if the Security Block is specially programmed.

**WARNING: Readykey for Windows will not communicate to door controllers without the Security Block installed**

### Demo

If you do attempt to use Readykey for Windows without the Security Block then you will get a message informing you that the software will operate in 'Demonstration Mode' only. Under these circumstances no communication will take place with the door controllers - including alarms and database updates.

## PC Specification

Below is a **Recommended** PC specification for non-networked PCs. However, when buying a new PC, you should install a PC with a high enough specification to easily meet current and future needs, particularly for systems controlling more than 32 doors.

Here are some pointers that will help you select the best system:

- The type and speed of the processor will determine the overall performance of the system. The processor types, in order of power, are 386SX, 386DX, 486SX, 486DX, 486DX2, Pentium. The higher the speed, measured in MHz, the better. Typical speeds are 16MHz, 20MHz, 25MHz, 33MHz, 50MHz, 66MHz.
- Windows performs better with more RAM, the minimum being 8 Mbytes, the more the better. Make sure when purchasing a system that there is room for RAM expansion, up to at least 16 or 32 Mbytes. It is better to spend money on increasing the memory of a PC than to improve the processing power.
- Usually the larger the hard disk the better its performance.
- A good quality color display should be used, preferably a 'SuperVGA' monitor with a resolution of 800x600 pixels (dots).

- Readykey for Windows requires a mouse, or other pointing device, to be used.
- Most PCs are now supplied with MS-DOS and Windows, or Windows 95 already installed.

In general, the more doors and personnel you will have on your system, the higher the PC specification you should have. Factors that may affect the choice of PC for your Readykey for Windows system include:

- Number of personnel
- Total number of sites
- Number of divisions
- Whether the Photo-ID module (described later) is being used, or intended to be used in the future
- How 'busy' the system is likely to be - this will depend largely on the number of keyholders and doors, but there may be other factors - e.g. some times of day may be busier than others, etc.

Radionics has carried out investigations to determine the PC-related factors which are likely to affect performance of the Readykey for Windows system:

- PC Specification - for example a 60MHz Pentium performed around 60% better at dealing with transactions than a 486sx 33 MHz.
- Windows version - Windows for Workgroups 3.11 gave an enhanced performance over Windows 3.1 - remember that Windows for Workgroups may be used on standalone PC systems, not just on those connected to a network.

### Recommended Specification

This is the PC specification that Radionics recommend you use for a Readykey for Windows system, to obtain a reasonable performance. **If a PC of a lower specification is used then the performance of Readykey for Windows will be reduced.**

<b>If you have an existing PC of a lower specification, which you wish to use for your Readykey for Windows system, then please contact Radionics Customer Service for advice on suitability.</b>
---

<b>Processor:</b>	<b>IBM compatible Pentium 75MHz</b>
<b>RAM:</b>	<b>8 Mbytes (preferably 16 Mbytes)</b>
<b>Hard Disk:</b>	<b>120 Mbytes</b>
<b>Floppy Disk:</b>	<b>3½" High Density</b>
<b>Display:</b>	<b>Color SuperVGA (800x600)</b>
<b>Ports:</b>	<b>1 parallel, 2 serial</b>
<b>Mouse:</b>	<b>*Windows supported</b>
<b>Printer:</b>	<b>*Windows supported</b>
<b>MS-DOS:</b>	<b>Version 5.0 or later</b>
<b>Windows:</b>	<b>‡ Version 3.11 or Windows 95</b>

\* **Windows supported** means any device that is compatible with Windows. When Windows is installed you will be required to tell it what types of printer and mouse are connected. If the particular make or model is not listed by Windows then the printer or mouse will almost certainly be compatible with one of the standard types, e.g. Microsoft Serial for the mouse; Epson, IBM or Hewlett Packard for printers.

‡ **Windows Version:** If you are intending to have more than one workstation on your system, then all your workstations **MUST** be running Windows for Workgroups 3.11 or Windows 95.

Readykey for Windows will operate on PCs running Windows 95, **but not under Windows NT**. If Windows 95 is being used, then the PC should have at least 12 Mbytes of RAM, preferably 16 Mbytes.

## Multiple PC Systems

All the workstations should meet the minimum specification given earlier. In particular, **ALL the workstations must have Windows for Workgroups 3.11 or Windows 95** installed.

The workstation which has the Readykey for Windows database and application files stored on it (the Readykey Server) should be a high specification PC - further information on PC Specifications for Multiple PC Readykey for Windows systems is included in *Readykey for Windows Multi-PC Installation Manual*

## Printers

As stated above any Windows supported printer may be used. However you **must** use a dot-matrix type printer for transaction printing as this gives an immediate report of events, a laser printer will give one line per page! A laser printer is best suited for producing reports on request. Overall, unless the best quality output is required, a good quality dot-matrix printer is most suitable. A printer for transaction printing should be exclusive to Readykey for Windows.

Ensure that a **PC to Printer Cable** is supplied for connecting the printer to the **Parallel Port** of the PC.

## Hard Disk Space

A number of factors will affect the amount of hard disk space required on a Readykey for Windows workstation:

- Size of database - the main factor to affect this will be the total number of personnel in the system.
  - Number of transactions required to be stored on the hard disk
- these are now described below in more detail:

### Database Size

All the information that forms part of the Readykey for Windows system is stored in a database on the hard disk of a PC. The main factor that affects the size of the database is the volume of keyholder information to be stored.

Readykey for Windows can support up to 18,000 keyholders in each of up to 128 divisions. As the number of keyholders in the system database expands, then so does the amount of disk space required.

If the Photo-ID module is also being used to store pictures of keyholders, then the amount of disk space required for each keyholder more than triples.

The table below illustrates the amount of disk space required for some typical database sizes:

Total Number of Personnel	Disk Space Required (No Picture)	Disk Space Required (All Keyholders have Picture)	Disk Space Required (50% of Keyholders have Picture)
4000	15 Mb	54 Mb	35 Mb
8000	30 Mb	109 Mb	69 Mb
10000	38 Mb	136 Mb	87 Mb
18000	68 Mb	246 Mb	156 Mb

**Note:** The above values are per division.

It is important that the number of keyholders, and whether the Photo-ID facility is being used is taken into consideration when purchasing the PC.

### Transaction Storage

Every event (transaction) that occurs on a Readykey for Windows system will be stored on the hard disk of the PC which stores the system database.

All transactions are stored in files, which are usually 1.2 Mb in size, although this value can be changed. The number of transactions stored in each file will vary between 18,000 and 40,000; dependent on how busy the system is - more transactions will be stored in a file on a busier system.

When a transaction file is full, Readykey for Windows will automatically create a new one.

A number of completed transaction files are stored on the hard disk of the PC (usually six), after which the oldest will be automatically deleted to conserve disk space.

Completed transaction files can and should be copied ('archived') to floppy disk, network or tape, to allow operators to perform a transaction search at a future date of past system activity.

The more transaction files required to be stored on the hard disk of the PC, the more disk space will be required.

### Serial Ports

Most PCs are now supplied with two **Serial Ports**. Usually one will have a 25-pin male connector, the other will have a 9-pin male connector, although sometimes both connectors will be of the same type. One of the ports will be assigned by MS-DOS as **COM1**; the other will be assigned as **COM2**. It is possible that there will be no external markings on the PC indicating what the port assignments are, refer to the documentation that came with the PC system for identification.

Some PCs have a special port, usually a small DIN connector, for a **Bus Mouse**. This is a normal mouse that connects directly to the PC's internal bus without using a serial port. This type of mouse is ideal if you need to use two serial ports for Readykey Interfaces. For example, if you are using a CNC-based system with Wiegand compatible readers as well as (or instead of) Readykey readers, then you will need a port for the CNC plus a port for a PC Interface Kit (K6100-LAN) with a K2012 Wiegand Interface. The PC Interface Kit will be needed to read the Wiegand ID devices.

It is recommended that you use a special bus mouse port, and install the PC Interface Kit, or CNC, in COM1:.



The mouse and PC Interface Kit must use different IRQ levels. If you have problems with the serial ports then ensure, using diagnostic software, that the mouse and PC Interface Kit are not sharing the same IRQ number. Normally the COM1: serial port is assigned IRQ4, COM2: is assigned IRQ3 etc.

## Checking Free Disk Space

Make sure there is enough free space on your hard disk, you should have at least **20 Mbytes** (20 megabytes, or 20million bytes) before installing Readykey for Windows.

**From within Windows** the File Manager reports the amount of free space (provided you have the directory 'tree' displayed) at the bottom of its window, e.g.

```
C: 17,220KB free, 83.026KB total.
```

**From MS-DOS** type *CHKDSK* at the C:> prompt. You will see something similar to the following:

```
C:\>CHKDSK
```

```
Volume TECHWRITING created 13/11/1991 16:59
Volume Serial Number is 176D-8B42
```

```
85018624 bytes total disk space
3956736 bytes in 7 hidden files
319488 bytes in 146 directories
60443008 bytes in 1137 user files
20297344 bytes available on disk

2048 bytes in each allocation unit
41513 total allocation units on disk
5028 available allocation units on disk
```

```
655360 total bytes memory
570368 bytes free
```

The figure required is 'bytes available on disk' , in this case 20297344, or just over 20 Mbytes.

**Note:** Some disk compression programs, such as DoubleSpace or Stacker, may give misleading information and also may degrade performance.

## MS-DOS and Windows

Readykey for Windows will operate with either Windows 3.1, Windows for Workgroups 3.11 and Windows 95.

Windows 95 is a replacement for both MS-DOS and Windows. However if using Windows 3.1 or Windows for Workgroups 3.11 then you should be using MS-DOS 5.0 or later.

**You should consult an experienced PC installer if you require further advice.**

## MS-DOS

There are 2 files that MS-DOS uses when your PC is switched on that affect the way in which the system operates. These files, **CONFIG.SYS** and **AUTOEXEC.BAT**, are normally created when MS-DOS is installed on your PC, however some of the settings may need to be changed. In addition, there are two files that define a number of Windows settings and options, **WIN.INI** and **SYSTEM.INI**. These files are referred to collectively as the system configuration files.

There are many possible configurations that can be used to 'fine-tune' the performance of your machine. Here will be described just the essential settings for running Readykey for Windows.

The Readykey for Windows installation program will check for the existence of these settings, and will recommend (and make if requested) changes to your system configuration files.

For the purpose of this manual it will be assumed that the MS-DOS files are in a sub-directory called C:\DOS and the Windows files are in a sub-directory called C:\WINDOWS - these are the defaults used when MS-DOS and Windows are installed.

The CONFIG.SYS and AUTOEXEC.BAT file shown below are complete and will work on any PC conforming to the minimum specification. Be aware that other applications may be used on the PC which require additional or different parameters to be set.

### **CONFIG.SYS - Windows 3.1**

```
DEVICE=C:\WINDOWS\HIMEM.SYS
DOS=HIGH
FILES=80
STACKS=9,256
```

### **AUTOEXEC.BAT - Windows 3.1**

```
C:\WINDOWS\SMARTDRV.EXE /X
C:\DOS\SHARE /L:80 /F:8192
PATH C:\DOS;C:\WINDOWS
PROMPT $p$g
WIN
```

### **CONFIG.SYS - Windows for Workgroups 3.11**

```
DEVICE=C:\WINDOWS\HIMEM.SYS
DOS=HIGH
FILES=80
STACKS=9,256
DEVICE=C:\WINDOWS\IFSHLP.SYS
```

### **AUTOEXEC.BAT - Windows for Workgroups 3.11**

```
PATH C:\DOS;C:\WINDOWS
PROMPT $p$g
WIN
```

It is beyond the scope of this document to discuss all the above parameters however some points should be noted.

- **FILES=80** is the minimum value for the FILES statement.
- **SMARTDRV** has the parameter **/X** to prevent write-caching on drive C:. This means that when data is written to the disk drive it is stored immediately and not kept in volatile memory. Although this will reduce performance slightly, it lessens the chance of data corruption on power loss etc.  
**Note:** Windows for Workgroups provides an alternative disk caching system - VCACHE. This line should be omitted on PC's running Windows for Workgroups 3.11.
- The extra parameters (**/L:80 /F:8192**) in the **SHARE** statement are important, make sure they are included.  
**Note:** Windows for Workgroups v3.11 or Windows 95, do not use SHARE, see the section below.
- The final statement in AUTOEXEC.BAT, **WIN**, starts up Windows. If you do not want Windows to start automatically then omit this line. See below to find out how to make sure the Readykey for Windows system also starts automatically.

## Windows 3.1 and Windows for Workgroups 3.11

Although easy to use, Windows is a complex system with a large number of features and functions. It is recommended that you take time to understand some of the functions supplied with Windows. The **Windows Tutorial** found under **Help** in the **Program Manager** is a good starting point.

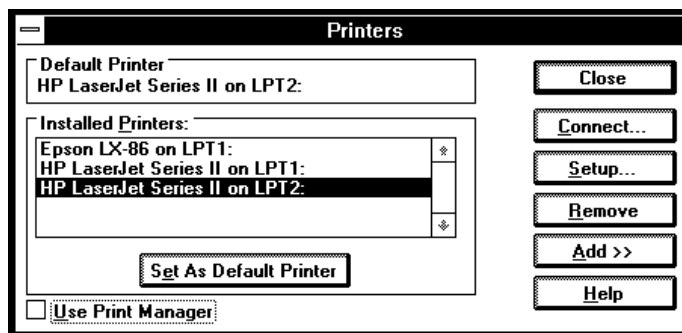
The Program Manager is the first application that appears when you start up Windows. It usually consists of a collection of smaller windows, or program groups, each containing various other applications. When Readykey for Windows is installed it will create its own group containing the Readykey for Windows icon.

Windows should be installed on your machine, if not already installed, using the **Setup** program. There are no particular special requirements for Windows, however bear in mind:

- Windows **must** be running in '386 Enhanced' mode. This will happen automatically if using even the minimum specification machine. You can check by selecting **About Program Manager...** from the Help menu in the Windows Program Manager.
- When installed, Readykey for Windows creates its own **Program Group**. If you want Readykey for Windows to run automatically on start up then you should copy the Readykey for Windows icon to the **Startup Program Group**.
- If you have enough hard disk space you should set up a **Permanent Swap File**. This can be done using Windows **Control Panel**. Select **386 Enhanced - Virtual Memory**.
- When using Windows for Workgroups, ensure that both **32-bit Disk Access** and **32-bit File Access** are enabled. This is also done in **Control Panel**, **386 Enhanced**, **Virtual Memory**. Note, however, that some types of disk drives might not allow 32-bit Disk Access to be set.

## Printing with Windows

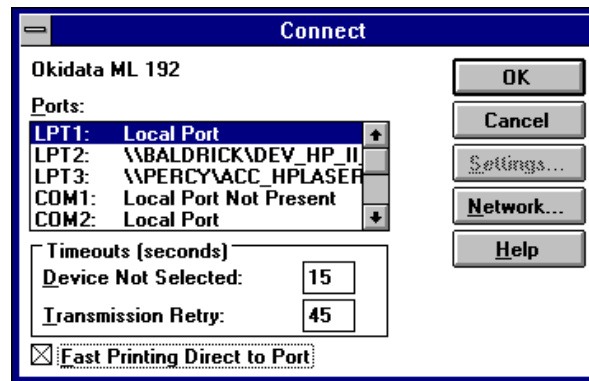
Windows has a special application called **Print Manager** used for controlling printer output sent to the printer from different applications. It allows several documents to be sent to the printer at the same time, managing the order in which they are actually printed. Readykey for Windows however, is not able to operate correctly through Print Manager, therefore you should disable Print Manager in **Control Panel: Printers**.



Note that this applies to Windows overall and not just Readykey for Windows. By disabling Print Manager you will have to wait for each printout to finish before you can send anything else to the printer.

You will need to set a default printer using the **Set As Default Printer** button - see below.

Choose the **Connect...** button.



Make sure that **Fast Printing Direct to Port** is selected for LPT1: and choose **OK**.

Choose **Close** to leave **Control Panel : Printers**, then close **Control Panel**

### Use of Printers by Readykey for Windows

Readykey for Windows uses two different 'routes' for different types of printer output.

1. All on-line transactions, that is the continuous printing of certain events as they are reported, is sent by default to an Epson compatible dot-matrix printer on LPT1: - usually the only printer port on most PCs.  
**WARNING:** Do **not** use a laser printer for on-line transactions, this will result in one transaction (event) per page!
2. All reports produced by the system, including database printouts, historical transactions etc., are sent to the Windows **Default Printer**. This may be the same printer as used for on-line transactions or it may be a different type of printer, a laser printer for instance, on a different printer port - if one is installed. If no default printer is set then no reports will be produced.

## Windows for Workgroups 3.11

**If you are installing Readykey for Windows on a PC that uses Windows for Workgroups then please note the following:**

- Windows for Workgroups v3.11 uses a different file sharing system to that provided by the MS-DOS SHARE command (described earlier). When installing Windows for Workgroups v3.11, you will have the opportunity of removing the MS-DOS SHARE command from AUTOEXEC.BAT. This should be done to prevent a conflict between SHARE and Windows for Workgroups' VSHARE.386.

## WIN.INI

**WIN.INI** is a special file that contains many settings for different Windows applications. When a Windows application, including Readykey for Windows, starts up it will examine WIN.INI to establish various settings. Readykey for Windows will put the following lines into WIN.INI:

```
[PAC Windows]
TRMPath=C:\RKEYWIN
SRVPath=C:\RKEYWIN

[Btrieve]
options=/m:48 /p:3584 /b:16 /f:80 /l:20 /n:12
```

**Note:** There is a possibility of a conflict with other applications that use the Btrieve filing system. These applications, just like Readykey for Windows, will seek out the section labeled [Btrieve] and use the values in the following line to set up their filing system. Readykey for Windows inserts this section because it needs specific Btrieve settings. If, however, another application also requires Btrieve settings, these may overwrite the Readykey for Windows values. If this occurs then Readykey for Windows may start giving errors or stop working altogether. One popular application that may cause trouble in this way is Microsoft Access. If you intend installing Access, either before or after installing Readykey for Windows, then use the Access *Custom Setup* and do **not** include support for Btrieve databases. This will prevent the Btrieve section in WIN.INI being overwritten.

## Windows 95

Windows 95 is in many ways different from previous versions of Windows. It operates much more closely with the PC hardware and will automatically modify files such as CONFIG.SYS and AUTOEXEC.BAT or their equivalents.

Extensive help and tutorials are provided by clicking on the **Start** button on the Toolbar and selecting **Help**.

For further help and advice please contact a experienced PC installer or attend a training course in regards to the operation of Windows 95.

## Using Other Applications with Readykey for Windows

Windows is a multi-tasking operating system. This means you may have several different applications running at the same time such as Word Processing, Spreadsheet, Diary etc. etc. Provided that Readykey for Windows has been started up then the operator should be able to switch from one task, such as Word Processing, to Readykey for Windows and back again. Any alarms that may occur that require acceptance will cause a message to appear over any other Windows application.

If you intend to use your PC for other applications then consider the following:

- Your PC should have at least 12 Mb of RAM.
- If you use 'full screen' DOS applications then alarms will not be reported until you return to a Windows screen.
- If you have a busy system, processing many transactions, then for maximum efficiency at reporting alarms, you should consider dedicating the PC to only operating Readykey for Windows **or** closing down the other applications while running Readykey for Windows.

# Installation of Readykey for Windows

---

## Before Installation

Before attempting installation of Readykey for Windows on a stand-alone PC you should have:

- A PC system that conforms at least to the minimum specification, with MS -DOS and Windows installed and set up as described above.
- A set of Readykey for Windows installation disks. 3½" disks are supplied, 5¼" disks are available on request.
- A Readykey for Windows Security Block (Dongle).

## Demo

If you do not have a Security Block then you may still install Readykey for Windows for demonstration purposes.

## Installing the Security Block

The security block, or 'dongle', supplied with the Readykey for Windows software should be connected into the PC's parallel printer port, a 25 way female D-type socket on the back of your PC. The printer cable is then connected to the similar socket on the security block.

The connection of this device has no effect on the normal operation of your printer and may be left in place permanently.

**Warning:** Some laptop or portable PCs may not be able to detect the Security Block. This will probably be due to the parallel port of the PC having a special setting, such as 'Bi-directional', for file transfer software. Try using the configuration programs that come with the laptop to change this setting to a directional setting.

**Note:** Users of IBM PS/2 systems that use MCA (Micro Channel Architecture), may find that the Security Block is not detected. If this occurs you should use the Reference Disk, supplied with the machine, to disable the *Parallel Port DMA*

## Installing Readykey for Windows

Once your PC is ready with MS-DOS and Windows installed, or Windows 95, you can now start installing Readykey for Windows itself.

Readykey for Windows is supplied on 3½" disks only. 5¼" disks are available on request. The procedure below assumes you are using **floppy drive a:**

## Running Setup

If Windows has not been started automatically when the machine is turned on then type **wind** at the MS-DOS C:> prompt. If this does not start Windows, then consult the machine suppliers or installers to establish how Windows should be started.

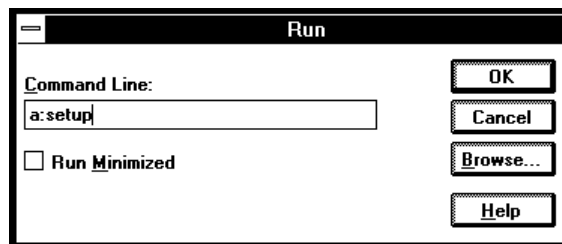
The procedure differs slightly between Windows 3.1/Windows for Workgroups 3.11 and Windows 95.

**Windows 3.1 or Windows for Workgroups 3.11**

1. From the Windows **Program Manager** choose **File** from the menu bar.
2. This drop down menu will now appear:



3. From this drop-down menu select **Run...**, the following dialogue box will now appear:



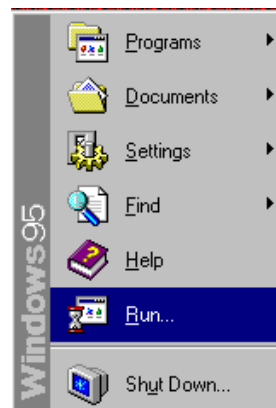
4. In the Command Line box type **a:setup** and then choose **OK**. This assumes that you are installing from drive a:, if you are installing from drive b: then type **b:setup** instead.  
Now go to step 5 below.

**Windows 95**

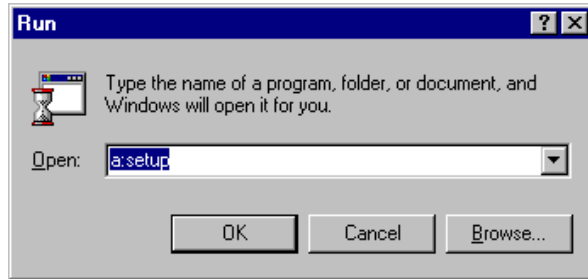
1. Click on the **Start** button on the Task Bar.



2. This menu will now appear:



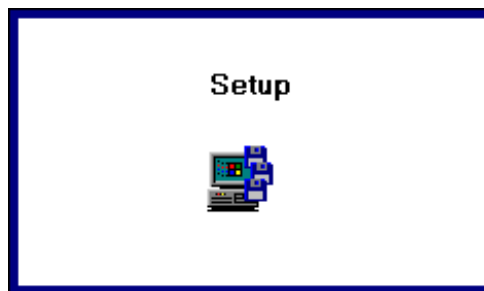
3. From this menu select **Run...**, the following dialogue box will now appear:



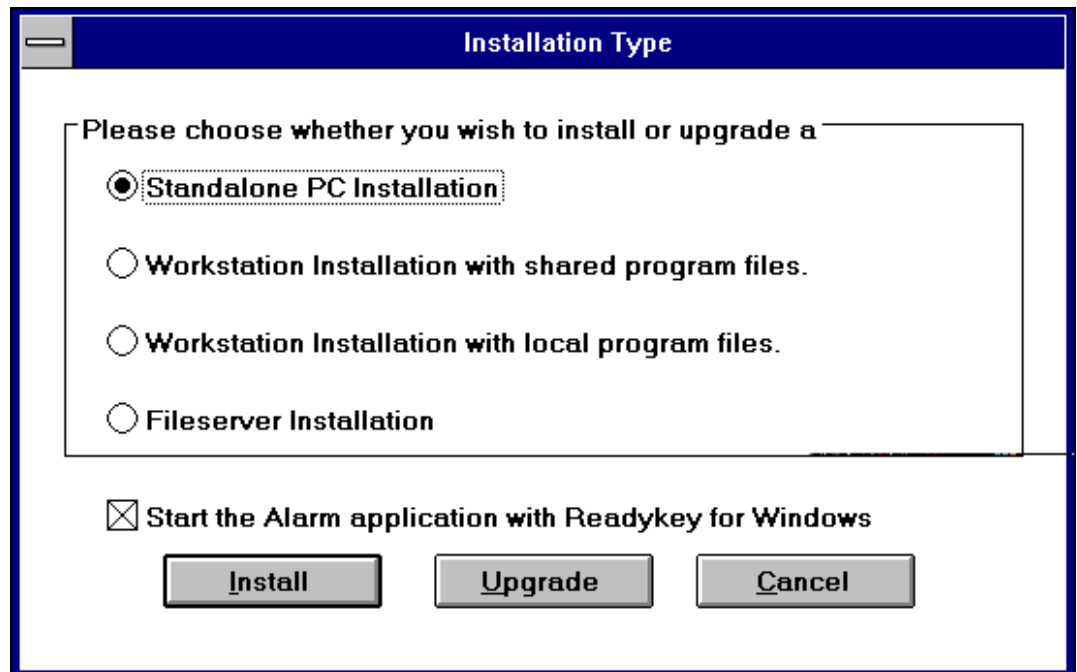
4. In the Command Line box type **a:setup** and then choose **OK**. This assumes that you are installing from drive a; if you are installing from drive b: then type **b:setup** instead.

From this point the procedure is the same for all versions of Windows.

5. The Setup icon will be displayed while Setup initializes itself:



6. You will be asked for the type of Readykey for Windows installation you require. Make sure **Standalone PC Installation** is selected (the default) and choose **OK**.



Notice that there is an option to start Alarm application. When selected this means that the Alarm application will start automatically when Readykey for Windows starts. Normally this will be the case for all Standalone installations.



**Note:** If you do not start Alarm then you will not be able to respond to alarms, display or print events as they happen unless manually enabled from within the Readykey for Windows program each time you start the system. You will, however, be able to view events using the **Transaction** application.

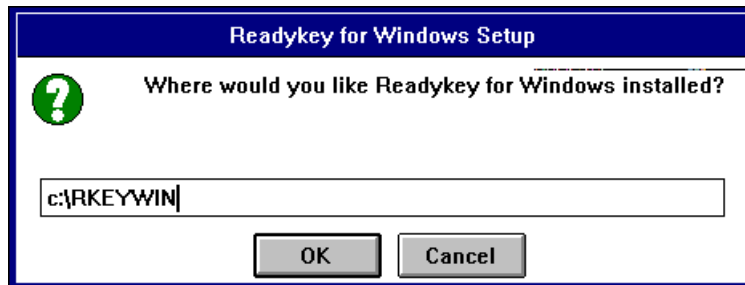
If you are installing a networked Readykey for Windows installation, then please refer to the *Readykey for Windows Multi PC Installation Manual* for details regarding file server and workstation software installation and configuration.

Now either choose **Install** or **Upgrade**. Choose **Install** if you are installing for the first time, or you want to start your system over again. Selecting **Install** will destroy any existing database. Use **Upgrade** if you are either upgrading from a previous version or reinstalling Readykey for Windows.

You will be warned if you are going to overwrite an existing database.

**Note:** You can choose **Cancel** to abort the Setup process. A warning will appear, stating that the process was incomplete.

7. You will now be asked to which directory and drive you wish to install Readykey for Windows:



Unless you want to install the system in a different directory or drive, then use the default, C:\RKEYWIN, and choose **OK**.

8. The hard disk of the PC will be checked at this stage for available space. You must have a minimum of 10 Mbytes of free disk space before Setup can proceed further.

**Note:** 10 Mbytes of free space is required even if you are upgrading from a previous version of Readykey for Windows.

9. If your hard disk has insufficient space to proceed, then the following message will appear:



10. If your PC's hard disk has sufficient disk space, you are now given the opportunity to review the options and settings you have chosen before the Setup program starts to copy Readykey for Windows files to your hard disk.

The image shows a 'Confirmation' dialog box with a blue title bar. It contains the following text and controls:

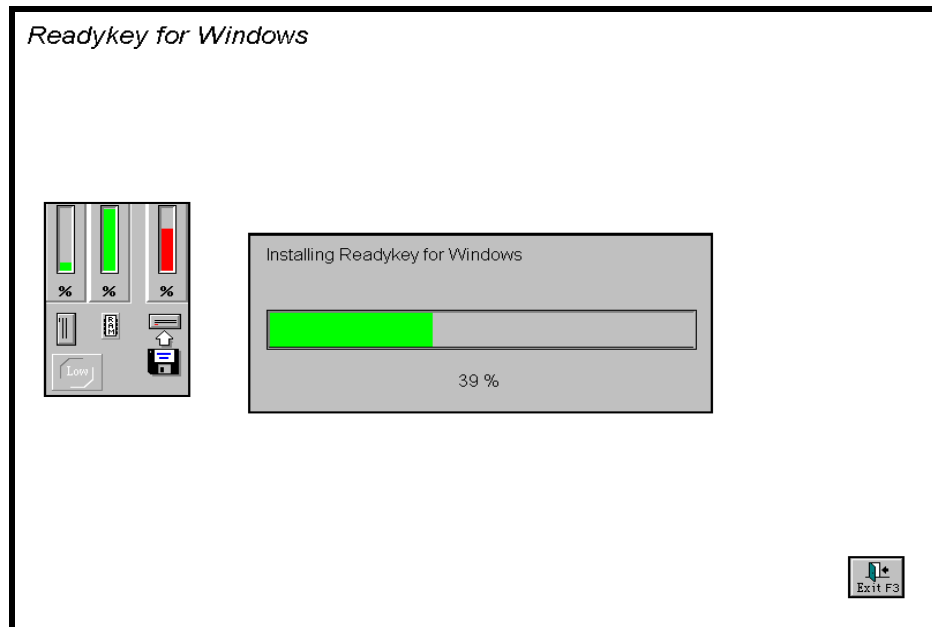
- You have chosen to :** Install a standalone copy of Readykey for Windows.
- Whose workstation number is :** 1
- In to** c:\RKEYWIN\
- With these languages :**
  - A list box containing 'US English'.
- Of which** US English is the default.
- Start the Alarm application with Readykey for Windows**
- Buttons: **OK**, **Change**, and **Cancel**.

**Note:** The workstation number is automatically set to 1 for standalone Readykey for Windows installations.

Should you wish to amend any of the options chosen, choose **Change**. This will return you to step 6 above.

Once you are happy with the installation options you have chosen, choose **OK** to proceed with the installation / upgrade of Readykey for Windows.

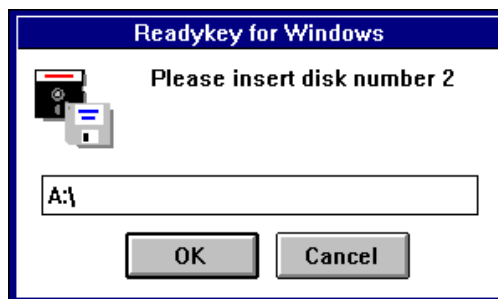
11. As the installation progresses you will see a box displaying which files are being copied and a moving horizontal bar across the center of the screen giving an indication of progress. Three vertical bars at the left of the screen indicate available hard disk space, available memory and the percentage of the current file being copied so far:



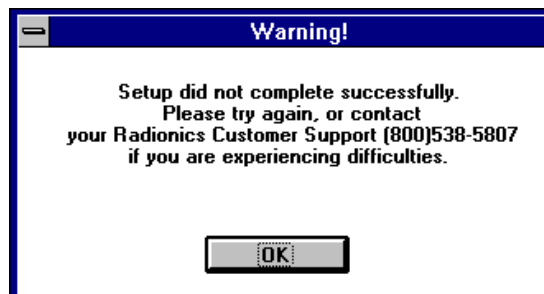
You can abort the installation at this stage by choosing the **Exit F3** button at the bottom right of the screen, or pressing F3 on the PC keyboard.

12. When the time comes to change disks a message box like the one below will appear. At this point remove the disk currently in the drive and insert the next disk being requested. Choose **OK** when the new disk is inserted.

If you insert the wrong disk the message will be repeated.

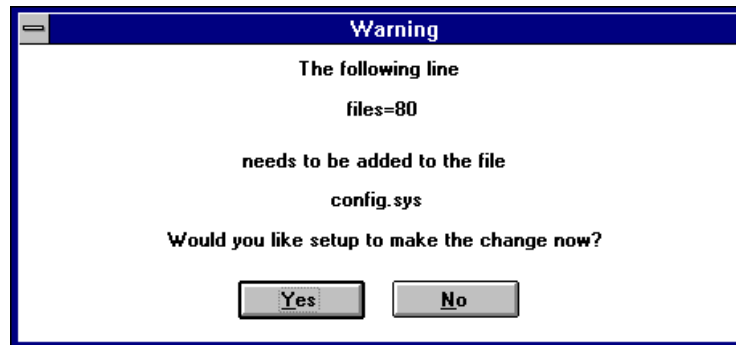


13. If Setup should fail for any reason or be aborted the following screen will appear. You will not be able to run Readykey for Windows until the setup process has succeeded. Call Radionics Customer Service if you require assistance.



14. At this stage several system checks are performed to ensure the PC, MS-DOS and Windows are suitable. If there is a problem you will get one or more of the following warnings:
- Your version of Windows may not be suitable - it must be Version 3.1 or later.
  - Your version of MS-DOS may not be suitable - it must be Version 3.3 or later (Version 5.0 or later is recommended).
  - The FILES= statement (in CONFIG.SYS) may not be large enough, it must be FILES=80 or higher.
  - No file sharing utility is installed on your computer - you must have either the DOS program SHARE.EXE loaded (via AUTOEXEC.BAT, with some additional parameters) or the Windows for Workgroups equivalent VSHARE.386 loaded.
- Note:** You will also receive a warning about file sharing if both SHARE.EXE and VSHARE.386 are loaded, as having both programs installed can cause conflicts.

Setup will offer you the opportunity to modify your AUTOEXEC.BAT and CONFIG.SYS files to meet the specification required by Readykey for Windows properly. You should accept the changes in most cases, unless you believe they are likely to cause conflict with other programs you use on the same computer as the one on which you intend to run Readykey for Windows. In this case you should contact Radionics Customer Service Department for advice.



Readykey for Windows also needs to make some changes to WIN.INI. These are described above in more detail.

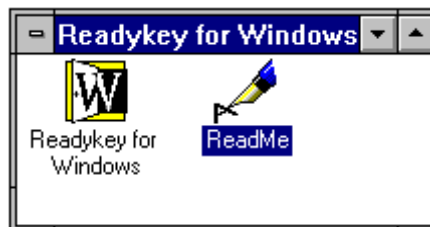
15. When Setup is complete and successful you will see this box. It is recommended that the PC is restarted before running Readykey for Windows so that any installed options or changes to your system configuration files can take effect. Choose **Restart Computer** to reboot your PC immediately, or choose **Exit Setup** to return to Microsoft Windows.



16. After rebooting your PC, if Windows does not start automatically then type `WIN` at the MS-DOS `C:\` prompt to start Windows.
17. Be sure to complete and return the Registration Card. This will allow Radionics to keep you informed of new products and upgrades as they become available.

## Windows 3.1 and Windows for Workgroups 3.11

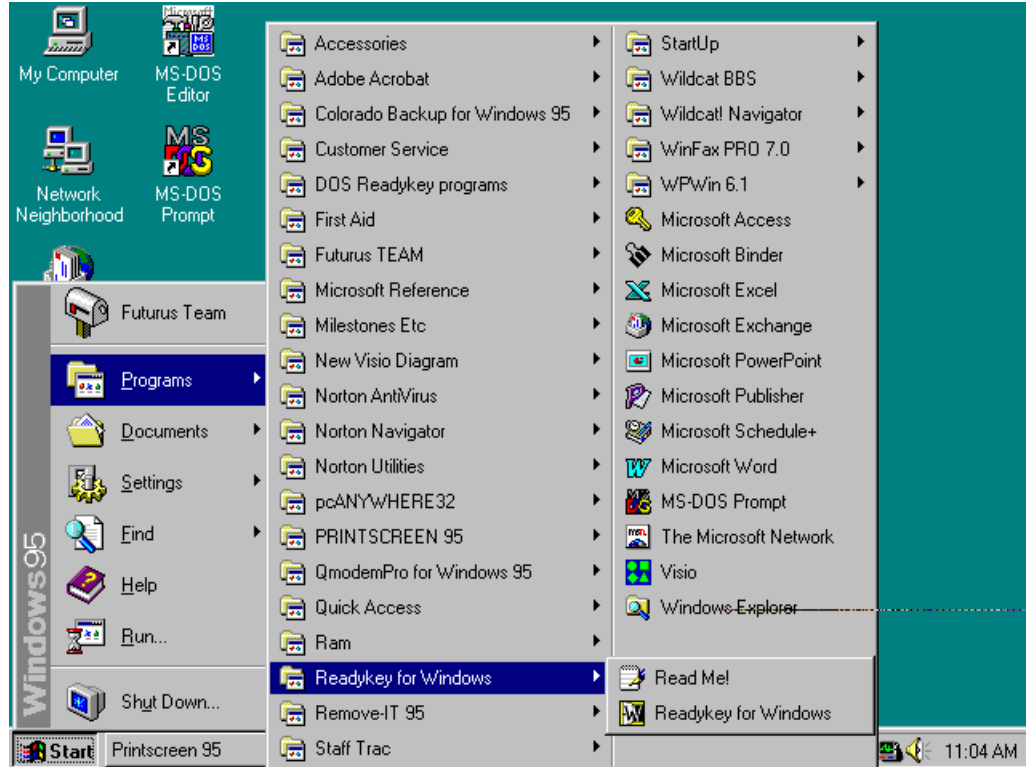
Readykey for Windows is now installed and a Program Group has been created containing the Readykey for Windows icon. Also included is a 'Read Me' file which contains information not currently included in the written documentation or on-line Help. You should read this file by double-clicking the icon. ( **Read Me** uses the Windows Write program to display the file).



If you want Readykey for Windows to start automatically when Windows itself starts up then you should copy the Readykey for Windows icon to the StartUp Program Group.

## Windows 95

Readykey for Windows has now been installed in a Readykey for Windows group under **Programs** on the **Start** button. Also included is a 'Read Me' file which contains information not currently included in the written documentation or on-line Help. You should read this file by double-clicking the file name. ( **Read Me** uses the Windows Write program to display the file).



## Using Readykey for Windows

Before starting to use Readykey for Windows, you should read the information contained in *Readykey for Windows System Programming Manual*

This document describes in detail starting Readykey for Windows, setting up any Readykey hardware and programming Readykey for Windows.