



## XP-400 Programming Instructions

Note: These Programming Instructions are intended to be used in conjunction with WI854C, please refer to WI854C for additional information, instructions and definitions.

### NOTE:

After 15 minutes of keypad inactivity the keypad will emit a steady tone indicating the panel has been left in Dealer Program Mode. Enter Dealer Code to exit or press the **B** key to return to Dealer

### DEFAULTING THE PANEL

1. Remove power from the panel.
2. Remove all wiring from terminal 15 (PGM) and terminal 3.
3. Connect terminal 15 (PGM) to terminal 3.
4. Apply power to the XP-400 control panel.
5. After a few seconds the ARMED, READY and **j** SYSTEM TROUBLE LEDs will flash.
6. The keypad will beep 3 times indicating the panel default values have been loaded.
7. Remove wiring between terminal 15 (PGM) and terminal 3.
8. Re-install original wiring for terminal 15 (PGM) and terminal 3.

**Note:** Any programming in Dealer Options 1 [96] and Dealer Options 2 [97] will not be defaulted. If Dealer Code Lockout has been programmed the panel will not default the Dealer Code.

### DEALER PROGRAM MODE - KEYPAD KEY DEFINITION

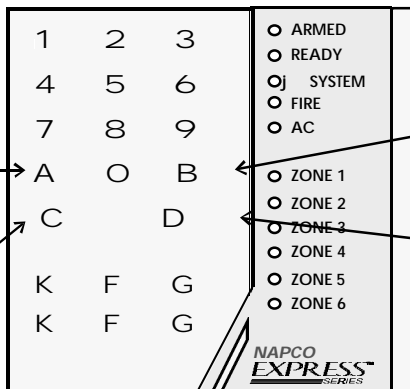
#### Hexadecimal Data Entry

To Enter a hexadecimal digit enter the following:

A = A 1    D = A 4  
B = A 2    E = A 5  
C = A 3    F = A 6

#### Scroll Key

Use this key to scroll through data that has been entered in Programming Blocks.



#### Set Key

Press this key before entering a Programming Block Number.

#### Blank Key

Press this key to disable all features within a LED type Programming Block or to blank out digits in a Direct Entry type Programming Block.

### Entering Dealer Program Mode

#### NOTE:

Entering Dealer Program Mode is not permitted while the panel is Armed, Reporting, or the Bell Output is on. To Enter Dealer Mode while the Bell is ON or the panel is Reporting or Armed; power up the panel and enter Dealer Mode within the first 3 minutes. Pressing the **b** key clears the 3 minute timer.

### Exiting Dealer Program Mode

Enter A 8 +

Dealer Code

(4)	(5)	(6)	(7)

Default Dealer Code shown in parentheses

Enter B A 8

Dealer Code

(4)	(5)	(6)	(7)

<input checked="" type="radio"/>	ARMED	ON
<input type="radio"/>	READY	OFF
<input checked="" type="radio"/>	SYSTEM	FLASHING

Indicates the panel is in Dealer Program Mode. The panel is ready for a programming block number to be entered.

<input type="radio"/>	ARMED	FLASHING
<input type="radio"/>	READY	FLASHING
<input checked="" type="radio"/>	SYSTEM	FLASHING

Indicates the panel is Ready to exit Dealer Program Mode. Enter the Dealer Code to exit.

## Types of Programming Blocks

### LED Programming Block

Enable features by pressing the key that corresponds to the associated feature; the LED will turn ON. To disable a feature press the key again; the LED will turn OFF. To disable all features within a LED Type Programming Block press the  $\square$  key; all LEDs will turn OFF.

#### 1 LED Programming Block Example

Program zones 2 and 3 as *Follower Zones*.

1. Enter Programming Block 02, by pressing  $\square$  (Beep), then  $\square$  2 (Beep).
2. Press the  $\square$  key to select zone 2.
3. Press the  $\square$  key to select zone 3.

02	Exit/Entry Follower
Default	
[OFF] $\square$	Zone 1
[OFF] $\times$	Zone 2
[OFF] $\times$	Zone 3
[OFF] $\square$	Zone 4

LED Type  
Programming  
Block

Zone 2 and Zone 3 LEDs are ON indicating that zones 2 and 3 have been programmed as follower zones.

$\square$	ZONE 1
$\bullet$	ZONE 2
$\bullet$	ZONE 3
$\square$	ZONE 4

### Direct Entry Programming Block

Enter data directly. For hexadecimal entries of A-F, use the  $\square$  key + 1 through  $\square$  keys, respectively. Use the  $\square$  key to blank out digits in Direct Entry type programming blocks. Default values are shown in parentheses.

#### 1 Direct Entry Programming Example 1

Program the panel for a 60 second *Exit Delay*.

1. Press  $\square$  (Beep)  $\square$  1  $\square$  (Beep)
2. Press  $\square$  6  $\square$  0  $\square$ .

10	Exit Delay
$\square$ 0 $\square$ 6 $\square$ 0 $\square$	Exit Delay, seconds
(0) (4) (5)	Maximum Entry 255

Direct Entry  
Type  
Programming  
Blocks

#### 2 Direct Entry Programming Example 2

(Hexadecimal data entry)

Program *Telephone Prefix Number* with a 9E.

1. Press  $\square$  (Beep)  $\square$  4  $\square$  4  $\square$  (Beep).
2. Press  $\square$  9
3. Press  $\square$  A
4. Press  $\square$  5

44	Dialing Prefix
$\square$ 9 $\square$ E $\square$ $\square$ $\square$	

- |           |          |          |
|-----------|----------|----------|
| $\square$ | ARMED    | OFF      |
| $\bullet$ | READY    | FLASHING |
| $\bullet$ | ✓ SYSTEM | FLASHING |

Indicates the panel is in Dealer Program Mode and the next digit entered will be interpreted as a Hexadecimal digit. Valid entries are 1-6 (A-F).

## Viewing Data in Programming Blocks

To view data within a programming Block, enter the Program Block Number, then press the **C** key, continue pressing the **C** key until all digits within the Programming Block have been viewed. Data will be displayed in the binary format shown in the table below:

	0/Blank	1	2	3	4	5	6	7	8	9	*A/0	B	C	D	E	F	* NOTE:
ZONE 1	<input type="radio"/>	<input type="radio"/>	<input checked="" type="radio"/>	<input type="radio"/>	<input checked="" type="radio"/>	<input type="radio"/>	<input checked="" type="radio"/>	<input checked="" type="radio"/>	<input type="radio"/>	<input checked="" type="radio"/>	<input type="radio"/>	<input type="radio"/>	<input checked="" type="radio"/>	<input type="radio"/>	<input checked="" type="radio"/>	<input type="radio"/>	In the following Programming Blocks, data that has been entered as a '0' will be displayed as an 'A': <i>Subscriber ID Numbers, Phone Numbers, Pager Leading and Trailing digits and Report Codes.</i>
ZONE 2	<input type="radio"/>	<input type="radio"/>	<input type="radio"/>	<input checked="" type="radio"/>	<input checked="" type="radio"/>	<input type="radio"/>	<input type="radio"/>	<input checked="" type="radio"/>	<input checked="" type="radio"/>	<input type="radio"/>	<input checked="" type="radio"/>	<input checked="" type="radio"/>	<input type="radio"/>	<input type="radio"/>	<input checked="" type="radio"/>	<input checked="" type="radio"/>	
ZONE 3	<input type="radio"/>	<input type="radio"/>	<input type="radio"/>	<input type="radio"/>	<input type="radio"/>	<input checked="" type="radio"/>	<input checked="" type="radio"/>	<input type="radio"/>	<input checked="" type="radio"/>	<input type="radio"/>	<input type="radio"/>	<input type="radio"/>	<input checked="" type="radio"/>	<input checked="" type="radio"/>	<input checked="" type="radio"/>	<input checked="" type="radio"/>	
ZONE 4	<input type="radio"/>	<input type="radio"/>	<input type="radio"/>	<input type="radio"/>	<input type="radio"/>	<input type="radio"/>	<input type="radio"/>	<input type="radio"/>	<input checked="" type="radio"/>	<input checked="" type="radio"/>	<input checked="" type="radio"/>	<input checked="" type="radio"/>	<input checked="" type="radio"/>	<input checked="" type="radio"/>	<input checked="" type="radio"/>	<input checked="" type="radio"/>	

● ZONE LED ON      ○ ZONE LED OFF

### Example: Viewing the Dialing Prefix

A Dialing Prefix of 9E has been programmed at Programming Block Number 44 (outside access number). Follow the steps below to view the data.:

- 1 Press **B** 4 4 to enter Programming Block 44. The 1st digit of Programming Block 44 is displayed.

44 Dialing Prefix 9 E

Data = 9

- ZONE 1
- ZONE 2
- ZONE 3
- ZONE 4

- 2 Press the **B** key to view the 2nd digit.


Data = E

- ZONE 1
- ZONE 2
- ZONE 3
- ZONE 4

For Technical Assistance, Contact  
the Napco Toll Free Helpline ☎  
(800) 645-9440

#### NOTE:

The Following Programming Options are not permitted for UL installations: [05], [06], [23-2], [26-4] and [26-4].

The  symbol by a programming Block indicates the programming option is not permitted for UL installations.

#### NOTE:

For information about programming blocks refer to XP-600 Installation Manual WI854C.

## Zone Features

### 00 Exit/Entry Zones

Default

☒ Zone 1  
☐ Zone 2  
☐ Zone 3  
☐ Zone 4

### 03 Auto Bypass Reentry Zones

Default

☐ Zone 1  
☐ Zone 2  
☐ Zone 3  
☐ Zone 4

### 06 Open Circuit Zones

Default

☐ Zone 1  
☐ Zone 2  
☐ Zone 3  
☐ Zone 4

See wiring  
diagram for  
Open Circuit  
wiring.

### 01 Home/Away with Delay Zones

Default

☐ Zone 1  
☐ Zone 2  
☐ Zone 3  
☐ Zone 4

### 04 24 Hour Protection Zones

Default

☐ Zone 1  
☐ Zone 2  
☐ Zone 3  
☐ Zone 4

### 07 Burg (Steady) Output

Default

☒ Zone 1  
☒ Zone 2  
☒ Zone 3  
☒ Zone 4

### 02 Exit/Entry Follower Zones

Default

☐ Zone 1  
☐ Zone 2  
☐ Zone 3  
☐ Zone 4

### 05 40 ms Loop Response Zones

Default

☐ Zone 1  
☐ Zone 2  
☐ Zone 3  
☐ Zone 4

### 08 Programmable Output (PGM)

Default

☒ Zone 1  
☒ Zone 2  
☒ Zone 3  
☒ Zone 4

## System Times

### 10 Exit Delay

Exit Delay, seconds  
(0) (4) (5) Maximum Entry 255

### 11 Entry Delay

Entry Delay, seconds  
(0) (3) (0) Maximum Entry 255

### 12 Burg (Steady) Output Time-out

Bell Time-out, minutes  
(0) (0) (5) Maximum Entry 255

### 13 Reserved

### 14 Test Timer Interval

Test Timer, days  
(0) (0) (1) Maximum Entry 255

### 15 Line Cut Time-to-Fail (Disabled = 000)

Line Cut Time-to-Fail, seconds  
(0) (0) (0) **Enable Feature**-Valid Entries 10-255

### 16 Wireless Supervisory Timer

Supervisory Timer, hours  
(1) (2) Maximum Entry 26

## System Features

### 20 Keypad Features 1

Default  
☐ ☐ Zn 1 LED ON = \*Keypad Panic 2 (K K )  
☐ ☐ Zn 2 LED ON = \*Keypad AUX (F F )  
☒ ☐ Zn 3 LED ON = \*Keypad Panic (G G )  
☐ ☐ Zn 4 LED ON = \*Ambush (4th User Code)  
\*See Note 1

### 21 Keypad Features 2

Default  
☒ ☐ Zn 1 LED ON = Audible panic  
☐ ☐ Zn 2 LED ON = Exit/Entry with Urgency  
☒ ☐ Zn 3 LED ON = Display Bypass (ARMED)  
☐ ☐ Zn 4 LED ON = Disable Code Entry Beeps

### 22 Miscellaneous Features 1

Default  
☐ ☐ Zn 1 LED ON = Abort Delay  
☒ ☐ Zn 2 LED ON = Easy Arm/Easy Exit  
☒ ☐ Zn 3 LED ON = Swinger Shutdown  
☐ ☐ Zn 4 LED ON = Bell on Line Cut (Armed)

### 23 Programmable Output (PGM) Features 1

Default  
☐ ☐ Zn 1 LED ON = Audio Verification  
☒ ☐ Zn 2 LED ON = \*Access Output (A 3 )  
☐ ☐ Zn 3 LED ON = \*Follow Keypad Sounder  
☐ ☐ Zn 4 LED ON = \*Keyfob/Keyswitch Chirp

#### NOTE 1:

Additional programming required for reporting, see Blocks [36]&[56].

### 24 Programmable Output (PGM) Features 2

Default  
☐ ☐ Zn 1 LED ON = **Reserved**  
☐ ☐ Zn 2 LED ON = AUX  
☐ ☐ Zn 3 LED ON = Panic  
☐ ☐ Zn 4 LED ON = Test Timer

### 25 Programmable Output (PGM) Features 3

Default  
☐ ☐ Zn 1 LED ON = AC Fail  
☐ ☐ Zn 2 LED ON = Low Battery  
☐ ☐ Zn 3 LED ON = \*Trouble  
☐ ☐ Zn 4 LED ON = Armed  
\*See Note 3

### 26 Miscellaneous Features 2

Default  
☐ ☐ Zn 1 LED ON = Momentary Keyswitch Arming  
☐ ☐ Zn 2 LED ON = Reserved  
☒ ☐ Zn 3 LED ON = Inhibit Fail to Communicate  
☒ ☐ Zn 4 LED ON = Inhibit Low Battery Display

#### NOTE 2:

Cannot be programmed with any other Programmable Output (PGM) Feature.

#### NOTE 3:

Includes Bell Cut, Receiver Fail-to-Respond, Receiver Tamper, Receiver JAM, Transmitter Low Battery and Transmitter Supervisory Failure.

## Telephone Number 1 Programming

### 30 Subscriber ID Number

--	--	--	--	--

### 31 Telephone Number 1

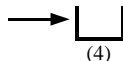
--	--	--	--	--	--	--	--	--	--	--	--	--	--	--	--	--	--

#### NOTE:

A fixed Dial Tone Detection (E) is included prior to the *Dialing Prefix* (Block Number 44). Programming an E is not required for Telco 1, Telco 2 and Telco 3. If dial tone detection is not desired select *No Dial Tone Detection* in Communicator Features (Block Number 46). Program a D if a 4 second delay is required.

### 32 Receiver Format

- |     |                      |
|-----|----------------------|
| [0] | Disabled             |
| [1] | Ademco Slow          |
| [2] | Radionics Slow       |
| [3] | Silent Knight Fast   |
| [4] | Universal High Speed |
| [5] | Reserved             |
| [6] | Point ID             |
| [7] | Pager                |



### 34 Zone Report, Telco 1

Default

- ☒ Zone 1  
☒ Zone 2  
☒ Zone 3  
☒ Zone 4

### 35 Zone Restore Report, Telco 1

Default

- ☐ Zone 1  
☐ Zone 2  
☐ Zone 3  
☐ Zone 4

### 36 System Reporting, Telco 1

Default

- ☐ Zn 1 LED ON = \*KP Panic 2 (K K )  
☐ Zn 2 LED ON = \*KP AUX (r r )/Ambush  
☒ Zn 3 LED ON = \*KP Panic (g G )  
☐ Zn 4 LED ON = Test Timer

\*See Note 1

#### NOTE 1:

Requires features to be enabled, see block [20].

### 37 System Reporting, Telco 1

Default

- ☐ Zn 1 LED ON = AC Fail Report (15 min. report delay)  
☒ Zn 2 LED ON = Low Battery Report  
☐ Zn 3 LED ON = \*Trouble Report  
☐ Zn 4 LED ON = Reserved

\*See Note 2

### 38 System Restore Report, Telco 1

Default

- ☐ Zn 1 LED ON = AC Restore Report  
☐ Zn 2 LED ON = Battery Restore Report  
☐ Zn 3 LED ON = Trbl Restore Report  
☐ Zn 4 LED ON = Reserved

### 39 Opening Closing Report, Telco 1

Default

- ☐ Zn 1 LED ON = User 1 Reporting  
☐ Zn 2 LED ON = User 2 Reporting  
☐ Zn 3 LED ON = User 3 Reporting  
☐ Zn 4 LED ON = User 4 Reporting

#### NOTE 2:

Includes Bell Cut, Receiver Fail-to-Respond, Receiver Tamper, Receiver JAM, Transmitter Low Battery and Transmitter Supervisory Failure.

ZONE 3 TX LOW BATTERY RF TRAN LOW BAT, ZN03"

### 33 Receiver Options

Default

- ☒ Zn 1 LED ON = 2300 Hz Handshake/Kisoff  
☐ Zn 2 LED ON = Sumcheck  
☐ Zn 3 LED ON = Single Digit  
☐ Zn 4 LED ON = No Handshake/Pager Extend

## Backup Telephone Programming

### 40 Subscriber ID Number (Telco 2)

--	--	--	--	--

### 41 Telephone Number 2

--	--	--	--	--	--	--	--	--	--	--	--	--

#### Note:

A fixed Dial Tone Detection (E) is included prior to the *Dialing Prefix* (Block Number 44). Programming an E is not required for Telco 1, Telco 2 and Telco 3. If dial tone detection is not desired select *No Dial Tone Detection* in Communicator Features (Block Number 46). Program a D if a 4 second delay is required.

### 44 Dialing Prefix

--	--	--	--	--

Dialing Prefix for Telco 1, Telco 2 & Telco 3.

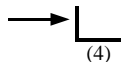
### 45 Communicator Features 1

Default

- ☒ ON ☐ Zn 1 LED ON = Communicator Enabled  
☒ ON ☐ Zn 2 LED ON = DTMF w/ Rotary Back up  
☐ OFF ☐ Zn 3 LED ON = DTMF only  
☐ OFF ☐ Zn 4 LED ON = Backup to Telco 2

### 42 Receiver Format

- |     |                      |
|-----|----------------------|
| [1] | Ademco Slow          |
| [2] | Radionics Slow       |
| [3] | Silent Knight Fast   |
| [4] | Universal High Speed |
| [5] | Reserved             |
| [6] | Point ID             |
| [7] | Pager                |



### 46 Communicator Features 2

Default

- ☐ OFF ☐ Zn 1 LED ON = No Dial Tone Detection  
☐ OFF ☐ Zn 2 LED ON = 2:1 Rotary Dialing  
☐ OFF ☐ Zn 3 LED ON = Backup if < 4 attempts  
☐ OFF ☐ Zn 4 LED ON = Reserved

### 43 Receiver Options

Default

- ☒ ON ☐ Zn 1 LED ON = 2300 Hz Handshake/Kissoff  
☐ OFF ☐ Zn 2 LED ON = Sumcheck  
☐ OFF ☐ Zn 3 LED ON = Single Digit  
☐ OFF ☐ Zn 4 LED ON = No Handshake

## Telephone Number 3 Programming

### 50 Subscriber ID Number

--	--	--	--	--

### 51 Telephone Number 3

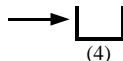
--	--	--	--	--	--	--	--	--	--	--	--	--	--	--

#### NOTE:

A fixed Dial Tone Detection (E) is included prior to the *Dialing Prefix* (Block Number 44). Programming an E is not required for Telco 1, Telco 2 and Telco 3. If dial tone detection is not desired select *No Dial Tone Detection* in Communicator Features (Block Number 46). Program a D if a 4 second delay is required.

### 52 Receiver Format

- |     |                      |
|-----|----------------------|
| [0] | Disabled             |
| [1] | Ademco Slow          |
| [2] | Radionics Slow       |
| [3] | Silent Knight Fast   |
| [4] | Universal High Speed |
| [5] | Reserved             |
| [6] | Point ID             |
| [7] | Pager                |



### 54 Zone Report, Telco 3

Default

- ☐ OFF ☐ Zone 1
- ☐ OFF ☐ Zone 2
- ☐ OFF ☐ Zone 3
- ☐ OFF ☐ Zone 4

### 55 Zone Restore Report, Telco 3

Default

- ☐ OFF ☐ Zone 1
- ☐ OFF ☐ Zone 2
- ☐ OFF ☐ Zone 3
- ☐ OFF ☐ Zone 4

### 56 System Reporting, Telco 3

Default

- ☐ OFF ☐ Zn 1 LED ON = \*KP Panic 2 (K K )
- ☐ OFF ☐ Zn 2 LED ON = \*KP AUX (r r )/Ambush
- ☐ OFF ☐ Zn 3 LED ON = \*KP Panic (g G )
- ☐ OFF ☐ Zn 4 LED ON = Test Timer

\*See Note 1

#### NOTE 1:

Requires features to be enabled, see block [20].

### 57 System Reporting, Telco 3

Default

- ☐ OFF ☐ Zn 1 LED ON = AC Fail Report (15 min. report delay)
- ☐ OFF ☐ Zn 2 LED ON = Low Battery Report
- ☐ OFF ☐ Zn 3 LED ON = \*Trouble Report
- ☐ OFF ☐ Zn 4 LED ON = Reserved

\*See Note 2

### 58 System Restore Report, Telco 3

Default

- ☐ OFF ☐ Zn 1 LED ON = AC Restore Report
- ☐ OFF ☐ Zn 2 LED ON = Battery Restore Report
- ☐ OFF ☐ Zn 3 LED ON = Trbl Restore Report
- ☐ OFF ☐ Zn 4 LED ON = Reserved

### 59 Opening Closing Report, Telco 3

Default

- ☐ OFF ☐ Zn 1 LED ON = User 1 Reporting
- ☐ OFF ☐ Zn 2 LED ON = User 2 Reporting
- ☐ OFF ☐ Zn 3 LED ON = User 3 Reporting
- ☐ OFF ☐ Zn 4 LED ON = User 4 Reporting

#### NOTE 2:

Includes Bell Cut, Receiver Fail-to-Respond, Receiver Tamper, Receiver JAM, Transmitter Low Battery and Transmitter Supervisory Failure.

ZONE 3 TX LOW BATTERY "RF TRAN LOW BAT, ZN03"

### 53 Receiver Options

Default

- ☒ ON ☐ Zn 1 LED ON = 2300 Hz Handshake/Kisoff
- ☐ OFF ☐ Zn 2 LED ON = Sumcheck
- ☐ OFF ☐ Zn 3 LED ON = Single Digit
- ☐ OFF ☐ Zn 4 LED ON = No Handshake/Pager Extend



## Report Codes

### 60 Zone Report Codes

Zone 1 Alarm Code

(3)

Zone 2 Alarm Code

(3)

Zone 3 Alarm Code

(3)

Zone 4 Alarm Code

(3)

#### NOTE:

The second digit of the Report Code is the number of the zone that is reporting. For example zone 5 report code (default of 3) would be 35.

### 61 Point ID Report Codes

Zone 1 Alarm Code

(3)

Zone 2 Alarm Code

(3)

Zone 3 Alarm Code

(3)

Zone 4 Alarm Code

(3)

- |   |               |
|---|---------------|
| 1 | FIRE          |
| 2 | PANIC         |
| 3 | BURGLARY      |
| 4 | HOLDUP        |
| 5 | GENERAL ALARM |
| 6 | RESERVED      |
| 7 | GAS ALARM     |
| 8 | HEAT ALARM    |
| 9 | RESERVED      |
| A | AUXILIARY     |
| B | 24 HOUR ALARM |

### 62 Zone Codes

Zone 1, 2, 3 & 4 Restore Code

(E)

Zone 1, 2, 3 & 4 Trouble Code

(F)

### 63 System Report Codes

Keypad Panic 2 (K K )

(1) (1)

Keypad AUX (F F )

(2) (3)

Keypad Panic (G G )

(2) (1)

Test Timer

(F) (F)

AC Fail

(F) (9)

Low Battery

(F) (8)

\*Trouble

(F) (1)

\*See Note 1

### 64 System Restore Code

(E)

#### NOTE 1:

Includes Bell Cut, Fire Trouble, Receiver Fail-to-Respond, Receiver Tamper, Receiver JAM, Transmitter Low Battery and Transmitter Supervisory Failure.

### 65 Opening and Closing Code

(C) Closing Code

(B) Opening Code

### 66 Ambush Report Code

(2) (2)

## Enhanced Communicator Features

### 67 Telephone Number 1

Default

[OFF]  Zn 1 LED ON = Opening after Alarm (Cancel Code)

[OFF]  Zn 2 LED ON = Conditional Closing

[OFF]  Zn 3 LED ON = Reserved

[OFF]  Zn 4 LED ON = Reserved

### 68 Telephone Number 3

Default

[OFF]  Zn 1 LED ON = Opening after Alarm (Cancel Code)

[OFF]  Zn 2 LED ON = Conditional Closing

[OFF]  Zn 3 LED ON = Reserved

[OFF]  Zn 4 LED ON = Reserved

## Wireless

### Transmitters

71 Zone 1

72 Zone 2

73 Zone 3

74 Zone 4

RF ID #

Point

					:	
					:	
					:	
					:	


Enter the RF ID# located on the Transmitter and Key Fob labels.

RF ID # XXXXXX:X

Enter the point number to be associated with the zone. If only one point of GEM-TRANS2 is used, enter a **1** in this location. For GEM-GB, GEM-DT, GEM-PIR enter a **1** in this location.

### Programming Example

Map point 1 of a window door transmitter, with RF ID# 0012B0:0 to Zone 3.

73 Zone 3    0 | 0 | 1 | 2 | B | 0 | : 0 | 1

1. Enter Dealer Mode.
2. Enter **B** (beeps) 7 3 (beeps)
3. Enter 0 0 1 2 **A** 2 0 0
4. Enter 1 (beeps)

Hexadecimal B Entry

Note: If the RF ID# in step 3 is not entered correctly the keypad will emit a 1 second tone indicating incorrect entry. Repeat steps 2 - 4 above.

### Keyfobs

81 Keyfob 1

82 Keyfob 2

83 Keyfob 3

84 Keyfob 4

RF ID #

AUX 1 AUX 2

					:		
					:		
					:		
					:		

### AUX 1 & 2 Programming

- 1 Panic
- 2 AUX
- 3 Bell ON
- 4 PGM
- 5 Instant
- 6 Access on PGM
- 7 Full Set System
- 8 Interior

### Hexadecimal Data Entry

To Enter a hexadecimal digit enter the following: A=A 1 B=A 2 C=A 3 D=A 4 E=A 5 F=A 6

## Downloading

### 90 Callback Telephone Number

--	--	--	--	--	--	--	--	--	--	--	--	--	--	--

### 91 Ring Count

--	--

(0) (9) Maximum Entry 15

### 92 Downloading Features

Default

☒ ON ☐ ZN 1 LED ON = Ring Method

☐ OFF ☐ ZN 2 LED ON = Answering Machine override

☐ OFF ☐ ZN 3 LED ON = Command 6(A 6) Download

☐ OFF ☐ ZN 4 LED ON = Reserved

### 93 Auto Download ID Number

--	--

## Dealer Programming

### 94 Dealer Code

--	--	--	--

(4) (5) (6) (7)

### 95 User 1 Code

--	--	--	--

(1) (2) (3) (4)

### 96 Dealer Options 1

Default

☐ OFF ☐ ZN 1 LED ON = Dealer Code Lockout

☒ ON ☐ ZN 2 LED ON = User 1 Code Lockout

☐ OFF ☐ ZN 3 LED ON = Reserved

☐ OFF ☐ ZN 4 LED ON = Reserved

### 97 Dealer Options 2

Default

☐ OFF ☐ ZN 1 LED ON = \*International Dialing Protocol

☐ OFF ☐ ZN 2 LED ON = \*Invert Bell Output

☐ OFF ☐ ZN 3 LED ON = System Trouble Auto Reset

☐ OFF ☐ ZN 4 LED ON = User 1 Code-Program only

\*See Note 1

### 98 Number of Re-Dials

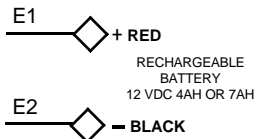
--

(9)

#### NOTE 1:

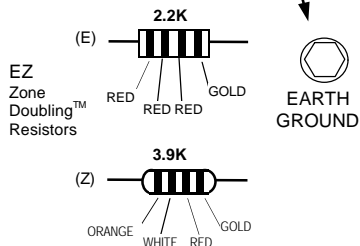
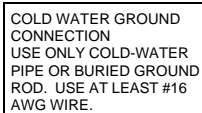
International Features

(REFER TO INSTALLATION INSTRUCTIONS WI853C)

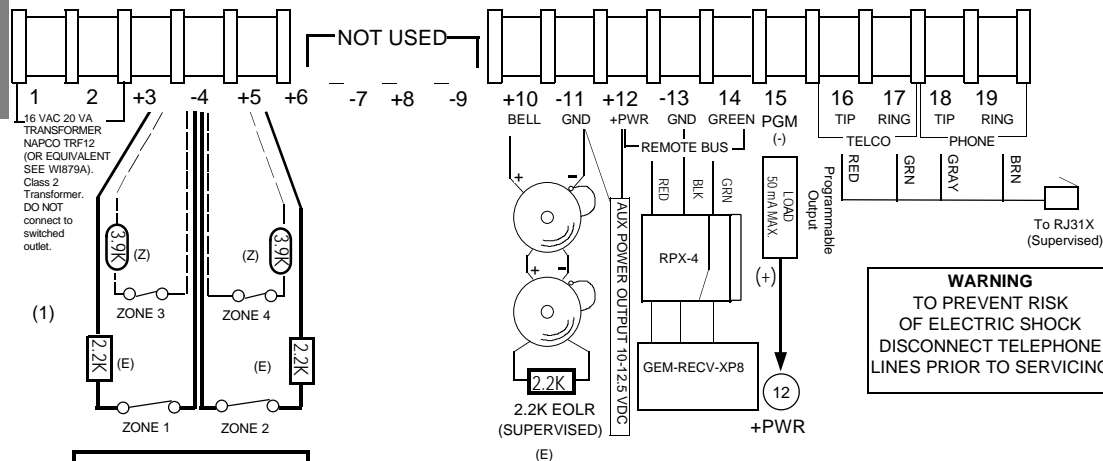


RESIDENTIAL BURG (4 HOUR STANDBY) <sup>(2)</sup>  
COMBINED STANDBY = 350 mA      BELL = 2.0 AMP

ALL OUTPUTS ARE CURRENT LIMITED

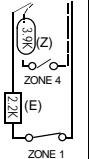


- (1) ALL ZONE RESISTORS MUST BE INSTALLED, EVEN IF ZONE IS NOT USED.
- (2) COMBINED STANDBY = KEYPAD CURRENT + AUX POWER CURRENT + PGM CURRENT.



### Normally Open Zone Wiring

Wire the normally open contact as shown (Zone 4). Program the zone for *Open Circuit* [06] operation.



**WARNING**  
TO PREVENT RISK  
OF ELECTRIC SHOCK  
DISCONNECT TELEPHONE  
LINES PRIOR TO SERVICING