

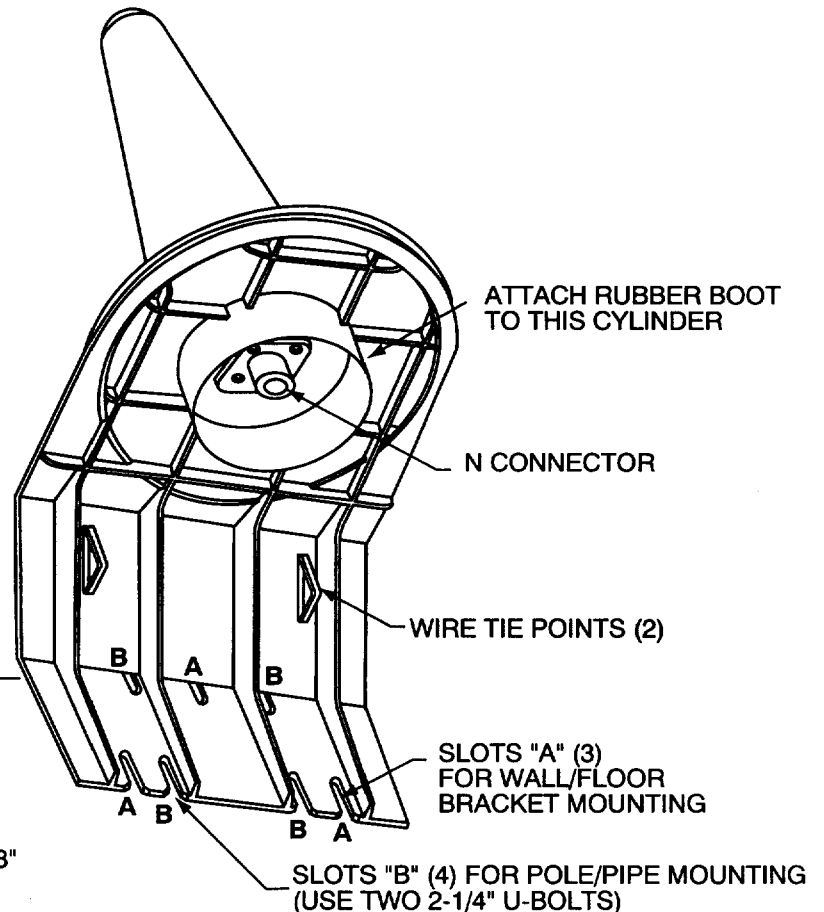
## No. 7825 OUTDOOR ANTENNA WITH BRACKET

### INSTALLATION INSTRUCTIONS

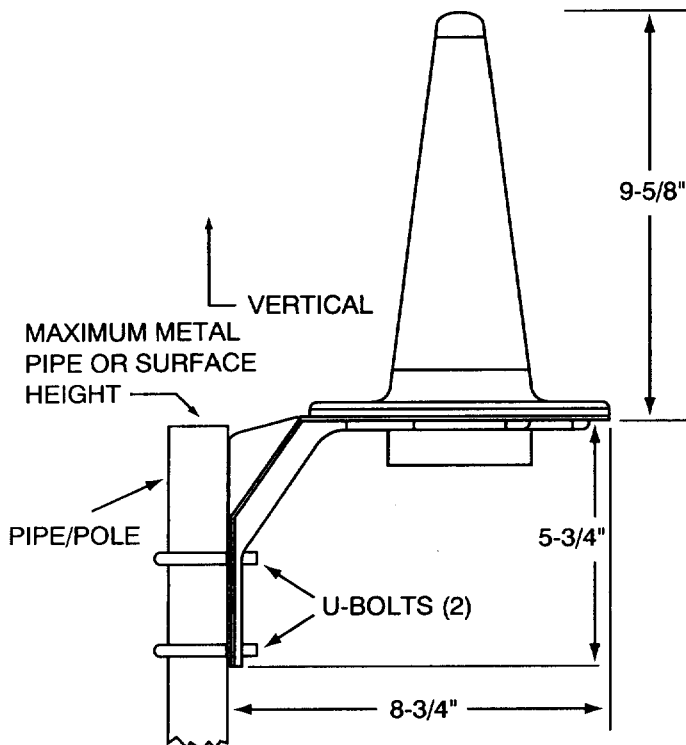
The No. 7825 Outdoor Antenna with Bracket is intended for general outdoor use with Ademco Long Range Radio products.

It includes a wall/pole mounting bracket, and a connector cable assembly with weather-resistant protective rubber boot. Screws and anchors for wall mounting are provided.

Figure 1 identifies  
the various parts  
of the 7825 →



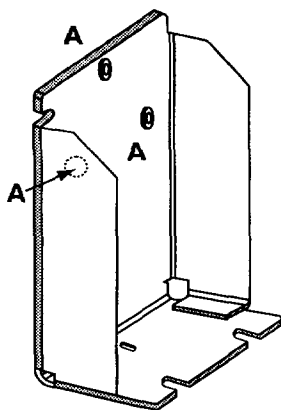
**Figure 1**



**Figure 2**

The unit may be mounted in several ways, *but it must be mounted vertically.*

- 1) **The bracket may be mounted to a wall**, by using the #10 screws and wall anchors provided. Slots "A" (see Figure 1) should be used.
- 2) **Figure 2 shows it mounted to a pole or pipe** with two 2-1/4" U-Bolts (not provided). Slots "B" (see Figure 1) should be used. *Be sure that the pole/pipe does not extend above the base of the antenna.*
- 3) **An optional No. 7825MB Floor Mount Bracket is available** and is shown and described in Figure 3.



**Figure 3**

← **OPTIONAL No. 7825MB FLOOR MOUNT BRACKET**

- 1) **Secure the bracket to the floor with 3 screws.** Use the three 3/4" screws and anchors provided with the 7825, or other fasteners as required.
- 2) **Attach the 7825 assembly (via its slots "A") to the bracket's holes "A".** Use the three 1/2" stainless steel screws provided with the bracket.

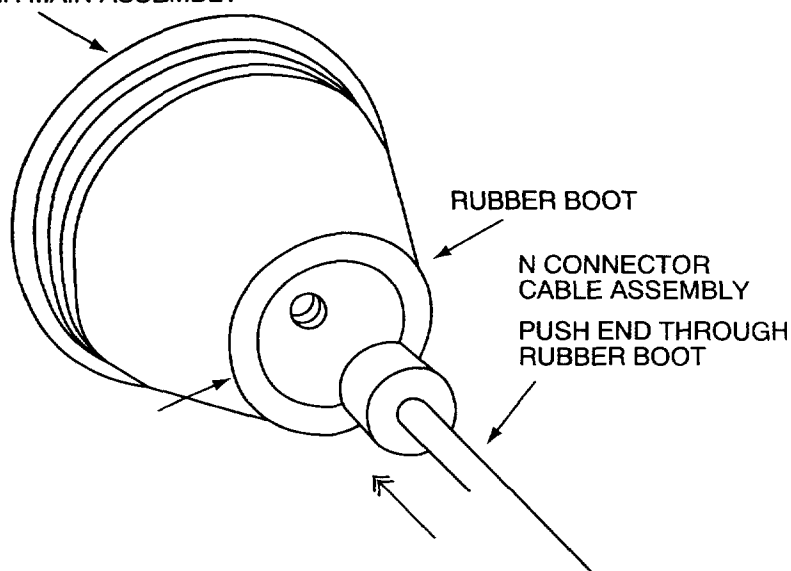
**AFTER MOUNTING THE MAIN ASSEMBLY:**

- 1) **Push the N connector cable assembly through the rubber boot** in the direction shown in Figure 4.

See Figure 1

- 2) **Connect the cable to the N connector at the bottom of the unit.**
- 3) **Wire tie the cable to a wire tie point** so as to form a drip loop.
- 4) **Push the end of the rubber boot over the 3" diameter cylinder** at the bottom of the unit.

PUSH THIS END OVER OUTSIDE OF 3" DIAMETER CYLINDER UNDER MAIN ASSEMBLY



**Figure 4**

REFER TO THE INSTRUCTIONS FOR THE EQUIPMENT WITH WHICH THIS DEVICE IS USED, FOR WARRANTY INFORMATION, AND FOR DETAILS REGARDING THE LIMITATIONS OF THE ENTIRE ALARM SYSTEM.



N7651 2/95

**ALARM DEVICE MANUFACTURING COMPANY.**

A DIVISION OF PITTMAY CORP.  
165 EILEEN WAY, SYOSSET, NY 11791

COPYRIGHT © 1995 PITTMAY CORPORATION